

BIDIREZIONALE
BI-ROTATIONAL

BPH

Pompa ad Ingranaggi
Gear Pump

CODICE DI ORDINAZIONE / ORDERING CODE

200 BPH 090 0 S

DIN
5 4 6 2
SE

BPH 90

BPH 105

BPH 112

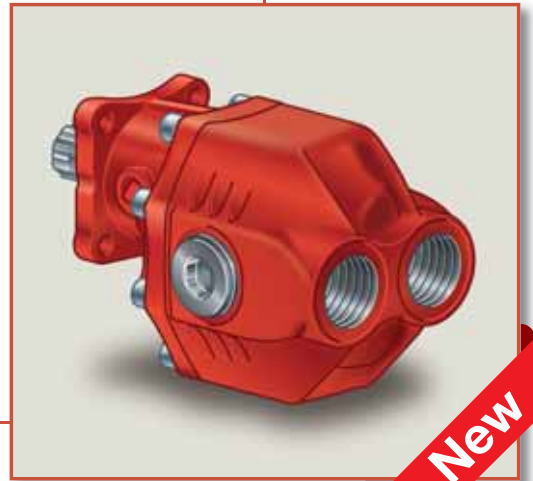
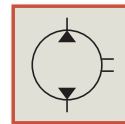
BPH 125

DIN 5462

CILINDRATA/DISPLACEMENT

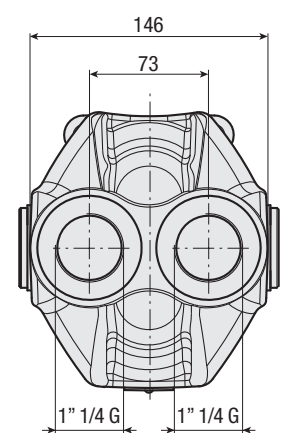
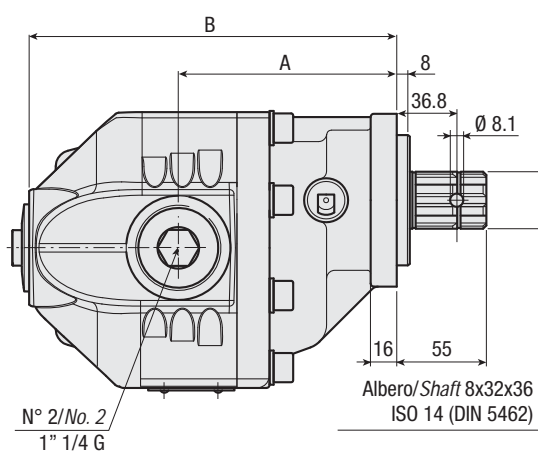
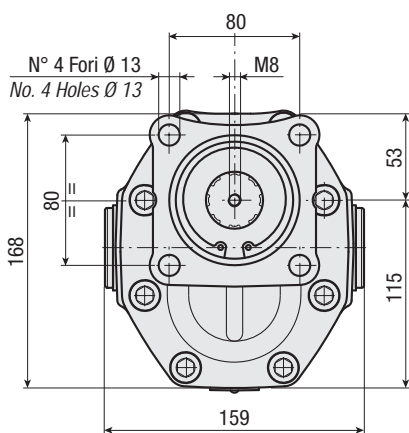
TIPO/TYPE

POMPA AD INGRANAGGI/GEAR PUMP



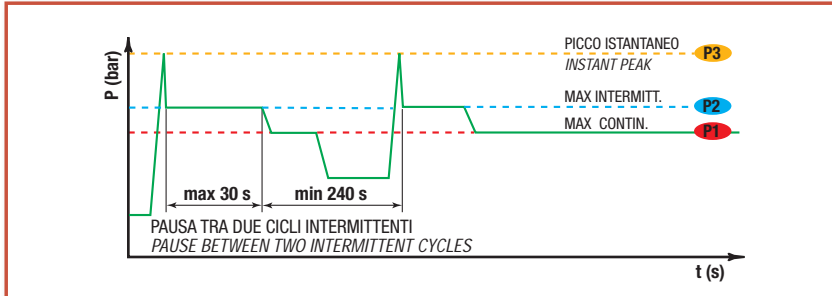
CARATTERISTICHE E DATI TECNICI / SPECIFICATIONS AND TECHNICAL DATA

TIPO TYPE	CODICE CODE	CILINDRATA DISPLACEMENT cm ³ /rev.	A mm	B mm	ASPIRAZIONE/MANDATA INLET/OUTLET	PESO WEIGHT kg
BPH 90	200BPH0900S	88.8	134	226	1" 1/4 G	20.8
BPH 105	200BPH1050S	98.5	138	230	1" 1/4 G	21.5
BPH 112	200BPH1120S	108.3	136	234	1" 1/4 G	22
BPH 125	200BPH1250S	119.2	141	239	1" 1/4 G	22.9



DATI TECNICI / TECHNICAL DATA

ESEMPIO CICLI LAVORO / EXAMPLE OF WORKING CYCLES



Pressione d'aspirazione: Inlet pressure:	0.7 ÷ 1.5 bar (assoluti/absolute)
Campo viscosità lavoro: Operating viscosity range:	12 ÷ 100 cSt
Temperatura fluido °C (t): Fluid temperature °C (t):	-10° + 80° C

Pressione Lavoro Working Press. P2	Contaminazione / Contamination		Filtro / Filter βx = 75
	NAS 1638	ISO 4406	
≤ 200 bar	12	21/18	40 μm
≥ 200 bar	11	20/17	25 μm

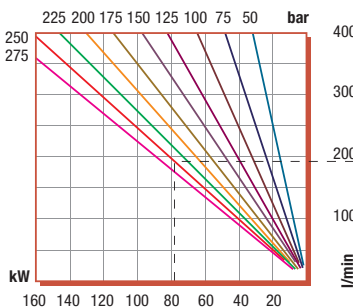
◀ **FILTRAZIONE CONSIGLIATA (ritorno o mandata)**
RECOMMENDED FILTERING (return or outlet)

TIPO / TYPE		BPH90	BPH105	BPH112	BPH125
Cilindrata Displacement	Vg cm ³ /n cm ³ /rev.	88.8	98.5	108.3	119.2
Pressione massima continua Max continuous operating pressure	P1 bar	250	225	210	210
Pressione massima intermittente Max intermitt. operat. press.	(max 30 s) P2 bar	275	250	230	230
Pressione massima di picco Max peak pressure	(≤ 0.1 s) P3 bar	290	265	245	245
Velocità massima intermittente Max intermittent speed	(P ≤ 20 bar) n3 n/min r.p.m.	2200	2200	2200	2000
Velocità massima continua Max continuous speed	(≤ P1) n1 n/min r.p.m.	1800	1800	1800	1500
Velocità minima intermittente Min intermittent speed	(≤ P2 x 0.5) (max 30 s) n4 n/min r.p.m.	300	300	300	300

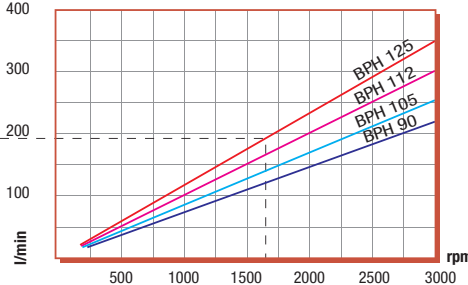
DIAGRAMMI / DIAGRAMS

RILIEVI ESEGUITI CON OLIO ISO VG 46 A 50° C (ν = 30 cSt)
THE ABOVE SPECIFICATIONS REFER TO OIL TYPE ISO VG 46 AT 50° C (ν = 30 cSt)

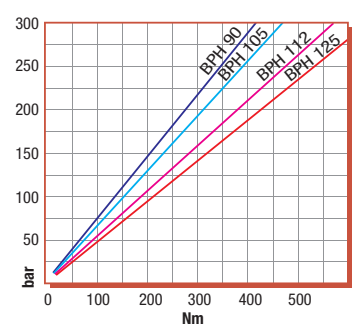
POTENZA ASSORBITA / POWER INPUT



PORTATA / CAPACITY



COPPIA ASSORBITA / DRIVE TORQUE



ROTAZIONE POMPA / PUMP ROTATION

